

Carbon Management Plan



Quarterly Performance Report 14th June 2023

*Please do not print this report



North
Northamptonshire
Council

Purpose

This report has been created in conjunction with NNC's roadmap to be Carbon Neutral by 2030 and provides an overview of performance for the 82 activities (43 short, 24 medium and 15 long term) within the Carbon Management Plan (CMP) - published in Dec 2022.

This report covers the Quarter 1 reporting period for 2023/24 (January to May).

Progress will be displayed for all 82 activities.



Introduction

Priority activities have been mapped to 8 thematic areas of focus:

- [Assets & Environment](#)
- [Behaviour](#)
- [Carbon Offsetting](#)
- [Carbon Sequestration & Biodiversity](#)
- [Fleet](#)
- [Highways & Waste](#)
- [Procurement & Supply Chains](#)
- [Travel](#)

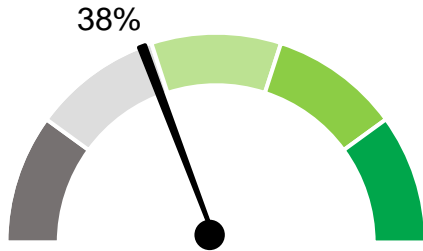
Further details for each area/ theme can be found in this report (by clicking on the area/ theme name above will take you to each respective page).

The speedometers on the next slide provide an overview of overall progress based upon the number of activities in progress divided by the total number of activities for each area/ theme.

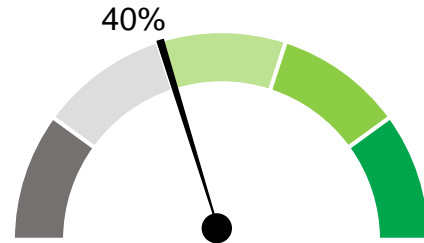


Quarter 1 - % of Activities in Progress

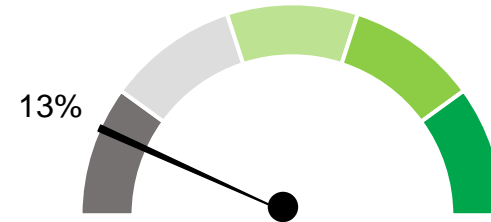
Assets & Environment



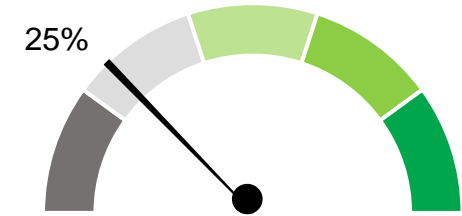
Behaviour



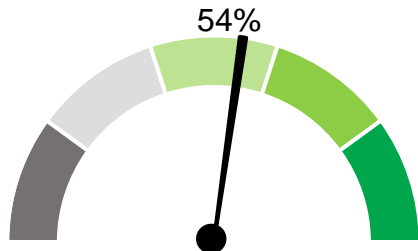
Carbon Offsetting



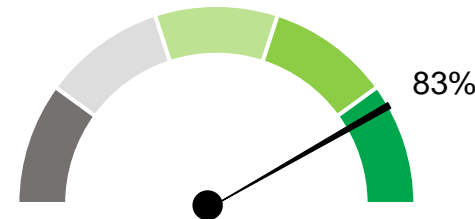
Carbon Sequestration & Biodiversity



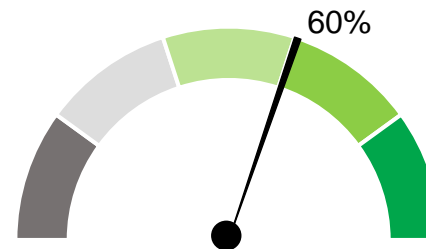
Fleet



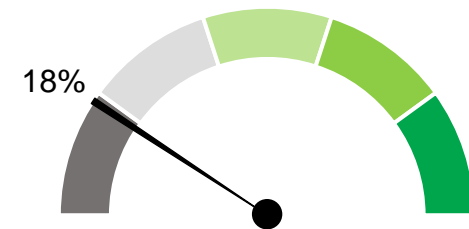
Highways & Waste



Procurement & Supply Chains



Travel



Supporting commentary

*The speedometers indicate the percentage of projects in progress for each area/ theme for short, medium and long term activities. See presenter notes below for further explanation. Please note, the colours used in the above speedometers represent our rate of progress in terms of becoming more carbon neutral as an organisation.

KPI Dashboard for Assets & Environment



	Short term activities	Medium term activities	Long term activities
Area/ theme KPIs	Activities to commence in the next 1-2 years	Activities to commence in the next 2-5 years	Activities to commence in the next 5+ years
Progress	<p>55%</p> <p>5/9 In Progress</p>	<p>0%</p> <p>0/4 In Progress</p>	<p>33%</p> <p>1/3 In Progress</p>
Exceptions (Risks & Issues)	<p>No Risks/ Issues</p>	<p>No Risks/ Issues</p>	<p>No Risks/ Issues</p>

Progress Key:

- Not Started
- In Progress
- Delivered



**North
Northamptonshire
Council**

Supporting commentary

The KPI dashboard provides a snapshot of overall progress and identifies any risks/ issues for each area and time period.

For Assets & Environment - short-term activities: 5/9 projects are in progress, indicating a 55% rate of progress; for medium: 0/4 projects are in progress, 0% rate of progress; and for long-term: 1/3 projects are in progress, indicating a 33% rate of progress.

There are **no** exceptions to report for this area.

KPI Dashboard for Behaviour



	Short term activities	Medium term activities	Long term activities
Area/ theme KPIs	Activities to commence in the next 1-2 years	Activities to commence in the next 2-5 years	Activities to commence in the next 5+ years
Progress	<p>80%</p> <p>4/5 In Progress</p>	<p>0%</p> <p>0/2 In Progress</p>	<p>0%</p> <p>0/3 In Progress</p>
Exceptions (Risks & Issues)	<p>No Risks/ Issues</p>	<p>No Risks/ Issues</p>	<p>No Risks/ Issues</p>

Progress Key:

- Not Started
- In Progress
- Delivered



**North
Northamptonshire
Council**

Supporting commentary

The KPI dashboard provides a snapshot of overall progress and identifies any risks/ issues for each area and time period.

For Behaviour - short-term activities: 4/5 projects are in progress, indicating a 80% rate of progress; for medium: 0/2 projects are in progress, 0% rate of progress; and for long-term: 0/3 projects are in progress, indicating a 0% rate of progress.

There are **no** exceptions to report for this area.

KPI Dashboard for Carbon Offsetting



	Short term activities	Medium term activities	Long term activities
Area/ theme KPIs	Activities to commence in the next 1-2 years	Activities to commence in the next 2-5 years	Activities to commence in the next 5+ years
Progress	<p>33%</p> <p>1/3 In Progress</p>	<p>0%</p> <p>0/4 In Progress</p>	<p>0%</p> <p>0/1 In Progress</p>
Exceptions (Risks & Issues)	<p>No Risks/ Issues</p>	<p>No Risks/ Issues</p>	<p>No Risks/ Issues</p>

Progress Key:

- Not Started
- In Progress
- Delivered



**North
Northamptonshire
Council**

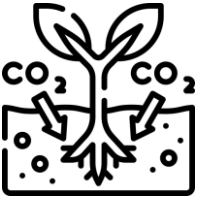
Supporting commentary

The KPI dashboard provides a snapshot of overall progress and identifies any risks/ issues for each area and time period.

For Carbon Offsetting - short-term activities: 1/3 projects are in progress, indicating a 33% rate of progress; for medium: 0/4 projects are in progress, 0% rate of progress; and for long-term: 0/1 project is in progress, indicating a 0% rate of progress.

There are **no** exceptions to report for this area.

KPI Dashboard for Carbon Sequestration & Biodiversity



	Short term activities	Medium term activities	Long term activities
Area/ theme KPIs	Activities to commence in the next 1-2 years	Activities to commence in the next 2-5 years	Activities to commence in the next 5+ years
Progress	<p>25%</p> <p>1/4 In Progress</p>	<p>0%</p> <p>0/2 In Progress</p>	<p>50%</p> <p>1/2 In Progress</p>
Exceptions (Risks & Issues)	<p>No Risks/ Issues</p>	<p>No Risks/ Issues</p>	<p>No Risks/ Issues</p>

Progress Key

- Not Started
- In Progress
- Delivered



**North
Northamptonshire
Council**

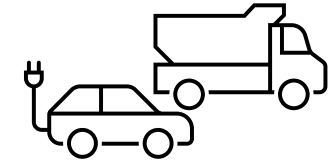
Supporting commentary

The KPI dashboard provides a snapshot of overall progress and identifies any risks/ issues for each area and time period.

For Carbon Sequestration & Biodiversity - short-term activities: 1/4 projects are in progress, indicating a 25% rate of progress; for medium: 0/2 projects are in progress, 0% rate of progress; and for long-term: 1/2 projects are in progress, indicating a 50% rate of progress.

There are no exceptions to report for this area.

KPI Dashboard for Fleet



	Short term activities	Medium term activities	Long term activities
Area/ theme KPIs	Activities to commence in the next 1-2 years	Activities to commence in the next 2-5 years	Activities to commence in the next 5+ years
Progress	<p>50%</p> <p>3/6 In Progress</p>	<p>40%</p> <p>2/5 In Progress</p>	<p>100%</p> <p>2/2 In Progress</p>
Exceptions (Risks & Issues)	<p>No Risks/ Issues</p>	<p>No Risks/ Issues*</p>	<p>No Risks/ Issues</p>

Progress Key:

- Not Started
- In Progress
- Delivered



**North
Northamptonshire
Council**

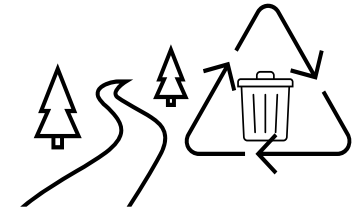
Supporting commentary

The KPI dashboard provides a snapshot of overall progress and identifies any risks/ issues for each area and time period.

For Fleet - short-term activities: 3/6 projects are in progress, indicating a 50% rate of progress, there is also 1 activity that is delivered; for medium: 2/5 projects are in progress, 40% rate of progress; and for long-term: 2/2 projects are in progress, indicating a 100% rate of progress.

There are **no** exceptions to report for this area.

KPI Dashboard for Highways & Waste



	Short term activities	Medium term activities	Long term activities
Area/ theme KPIs	Activities to commence in the next 1-2 years	Activities to commence in the next 2-5 years	Activities to commence in the next 5+ years
Progress	<p>80%</p> <p>4/5 In Progress</p>	There are no medium term activities for this area/ theme	<p>100%</p> <p>1/1 In Progress</p>
Exceptions (Risks & Issues)	<p>No Risks/ Issues</p>	N/A	<p>No Risks/ Issues</p>

Progress Key:

- Not Started
- In Progress
- Delivered



**North
Northamptonshire
Council**

Supporting commentary

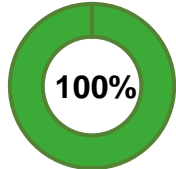
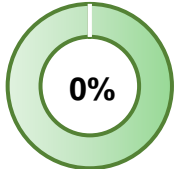
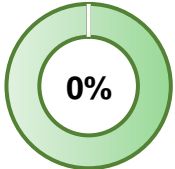



The KPI dashboard provides a snapshot of overall progress and identifies any risks/ issues for each area and time period.

For Highways & Waste - short-term activities: 4/5 projects are in progress, indicating a 80% rate of progress, and 1 activity has been delivered; There are no medium-term activities for this area; and for long-term: 1/1 project is in progress, indicating a 100% rate of progress.




There are no exceptions to report for this area.

KPI Dashboard for Procurement & Supply Chains



	Short term activities	Medium term activities	Long term activities
Area/ theme KPIs	Activities to commence in the next 1-2 years	Activities to commence in the next 2-5 years	Activities to commence in the next 5+ years
Progress	 <p>100%</p> <p>6/6 In Progress</p>	 <p>0%</p> <p>0/2 In Progress</p>	 <p>0%</p> <p>0/2 In Progress</p>
Exceptions (Risks & Issues)	 <p>No Risks/ Issues</p>	 <p>No Risks/ Issues</p>	 <p>No Risks/ Issues</p>

Progress Key:

-  Not Started
-  In Progress
-  Delivered



**North
Northamptonshire
Council**

Supporting commentary

The KPI dashboard provides a snapshot of overall progress and identifies any risks/ issues for each area and time period.

For Procurement & Supply Chains - short-term activities: 6/6 projects are in progress, indicating a 100% rate of progress; for medium: 0/2 projects are in progress, 0% rate of progress; and for long-term: 0/2 projects are in progress, indicating a 0% rate of progress.

There are **no** exceptions to report for this area.

KPI Dashboard for Travel



	Short term activities	Medium term activities	Long term activities
Area/ theme KPIs	Activities to commence in the next 1-2 years	Activities to commence in the next 2-5 years	Activities to commence in the next 5+ years
Progress	<p>20%</p> <p>1/5 In Progress</p>	<p>20%</p> <p>1/5 In Progress</p>	<p>100%</p> <p>1/1 Delivered</p>
Exceptions (Risks & Issues)	<p>No Risks/ Issues</p>	<p>No Risks/ Issues</p>	<p>No Risks/ Issues</p>

Progress Key:

- Not Started
- In Progress
- Delivered



**North
Northamptonshire
Council**

Supporting commentary

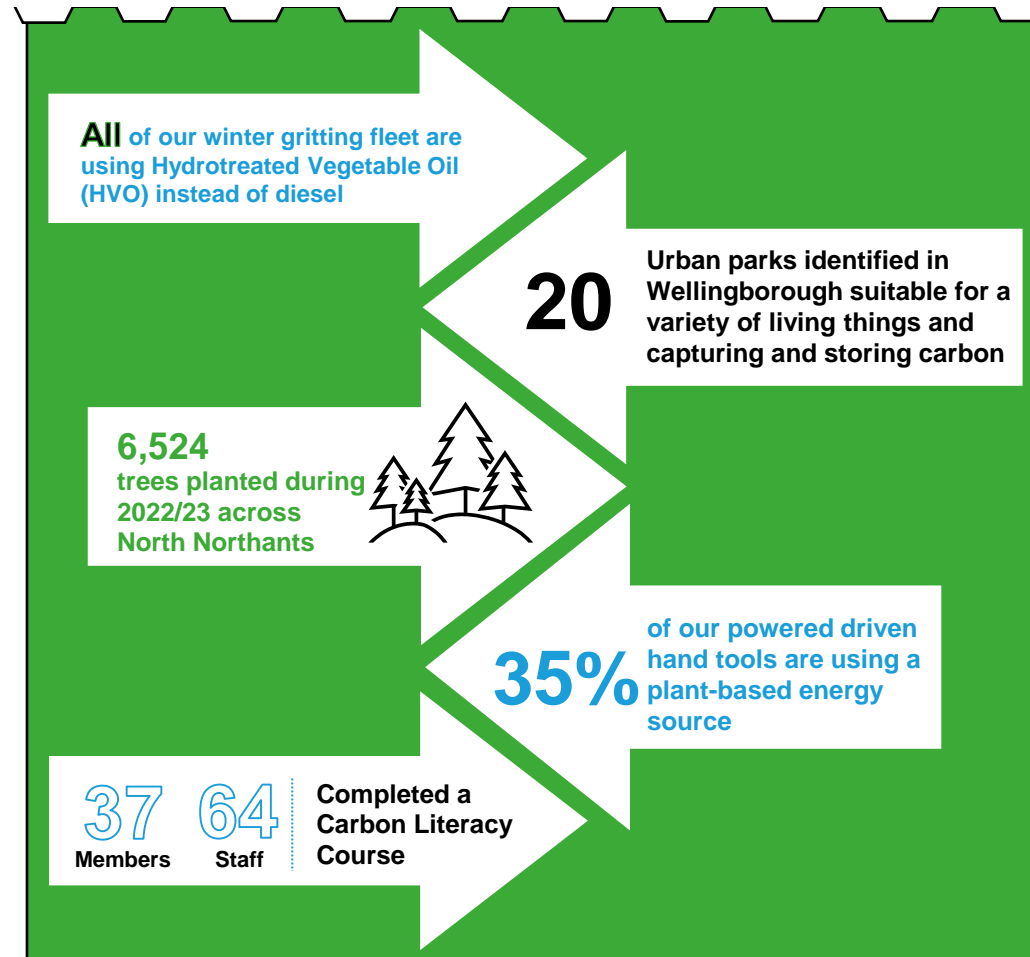
The KPI dashboard provides a snapshot of overall progress and identifies any risks/ issues for each area and time period.

For Travel - short-term activities: 1/5 projects are in progress, indicating a 20% rate of progress, there are also 4 activities that have delivered; for medium: 1/5 projects are in progress, 20% rate of progress, 1 activity has also delivered; and for long-term: 1/1 project has delivered.

There are **no** exceptions to report for this area.

Our Carbon Neutral Journey

The KPI metrics below illustrate a snapshot of our achievements so far. We will build upon this list quarterly as more KPI data becomes available.



Questions?

Please contact a member of the Carbon Management Programme Team



Greg Haynes

Climate Change & Sustainability Officer
Greg.Haynes@northnorthants.gov.uk



Nicole Geary

Project Manager, Place & Economy
Nicole.Geary@northnorthants.gov.uk



Fiona Smith

Project Support Officer, Place & Economy
Fiona.Smith@northnorthants.gov.uk



Thank You!



North
Northamptonshire
Council